

# HEADLAMPS & HELMET LIGHTS

---





# INTRODUCTION

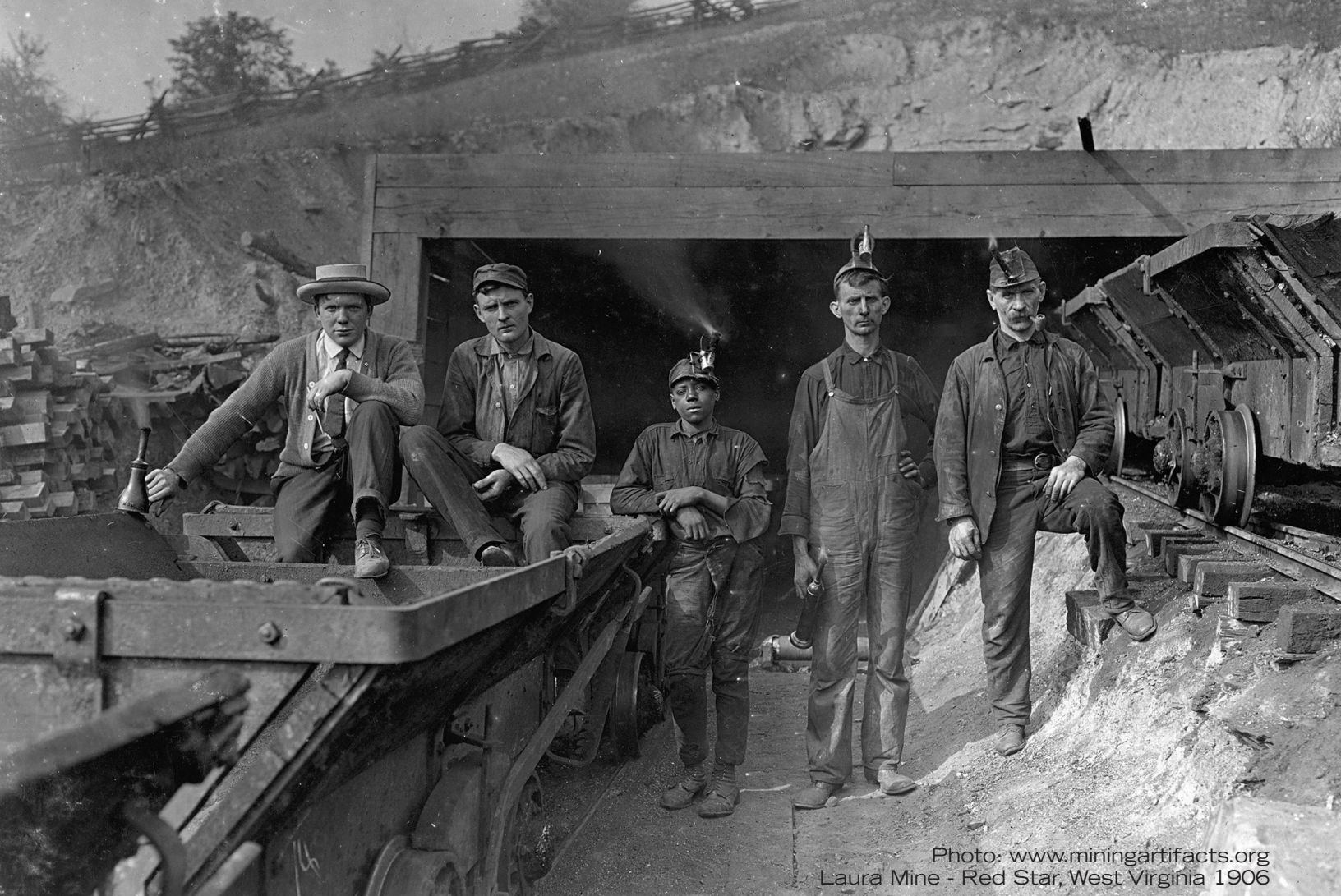


Photo: [www.miningartifacts.org](http://www.miningartifacts.org)  
Laura Mine - Red Star, West Virginia 1906

## #DONTSTOPINTHEDARK

No matter the season or geographic area, darkness can be an obstacle to getting work done. Headlamps have been in use since the early 1900s. We've come a long way from carbide lamps and Thomas Edison's electric cap lamps for miners.

Standard headlamps traditionally offered spot-lighting. The resultant beam is focused straight ahead lighting. It essentially provides tunnel vision where you can see objects straight ahead but nothing on either side.

The picture above shows coal miners with traditional miner lights. Lights today are now powered via conventional (AAA, AA, CR123) batteries.

Advancements in LED technology have resulted in increasingly brighter lights and lighter weight solutions.



# A NEW SOLUTION

## FOXFURY HEADLAMPS

In 2003, FoxFury introduced its first LED wide beam headlamp. FoxFury's headlamp lineup helps get the job done safely and well. Learn more about these features in the pages ahead.





## HANDS-FREE



### LIGHT WHERE YOU CAN SEE IT, NOT WHERE YOU HAVE TO HOLD IT.

---

Headlamps and helmet lights are a valuable tool because they allow hands-free operation. This allows the operator to use both of their hands for holding tools and working.

Pictured above, an AV installer is running cable in a building installation. Confined attics and small crawl spaces have little ambient lighting and the potential to contain dangerous trip and entanglement hazards. In this particular situation, tools and other equipment were able to be safely carried by hand so that work could be performed.



# PANORAMIC LIGHTING



## SEE WIDER. SEE BETTER.

When people think of headlamps, they think of miner style lights that offer traditional spotlighting. This results in tunnel vision.

FoxFury's front mounted headlamps and helmet lights enable the user to see wider and better. The end result is better immediate situation assessment, which allows the user to quickly diagnose what's involved in a scene and make decisions to improve safety and function.

In the picture above, two firefighters are entering a building attempting to pull out an unconscious worker. The panoramic light enables them to quickly see hazards and locate the worker so that they can get him out safely.



# WORK FASTER



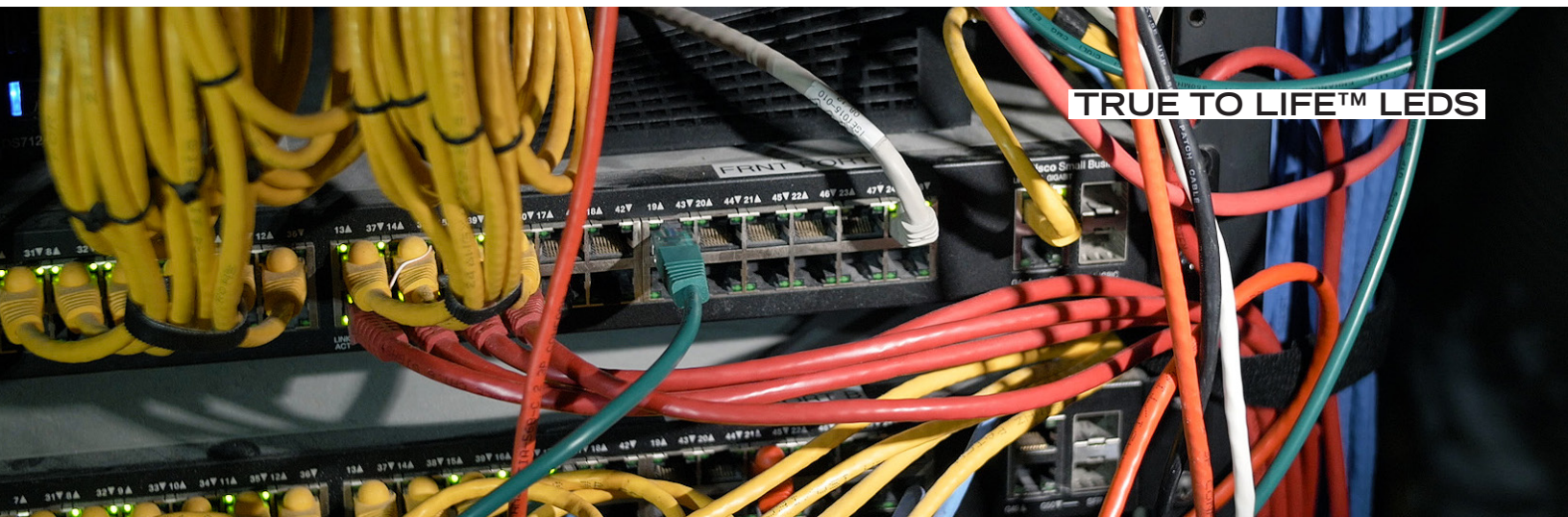
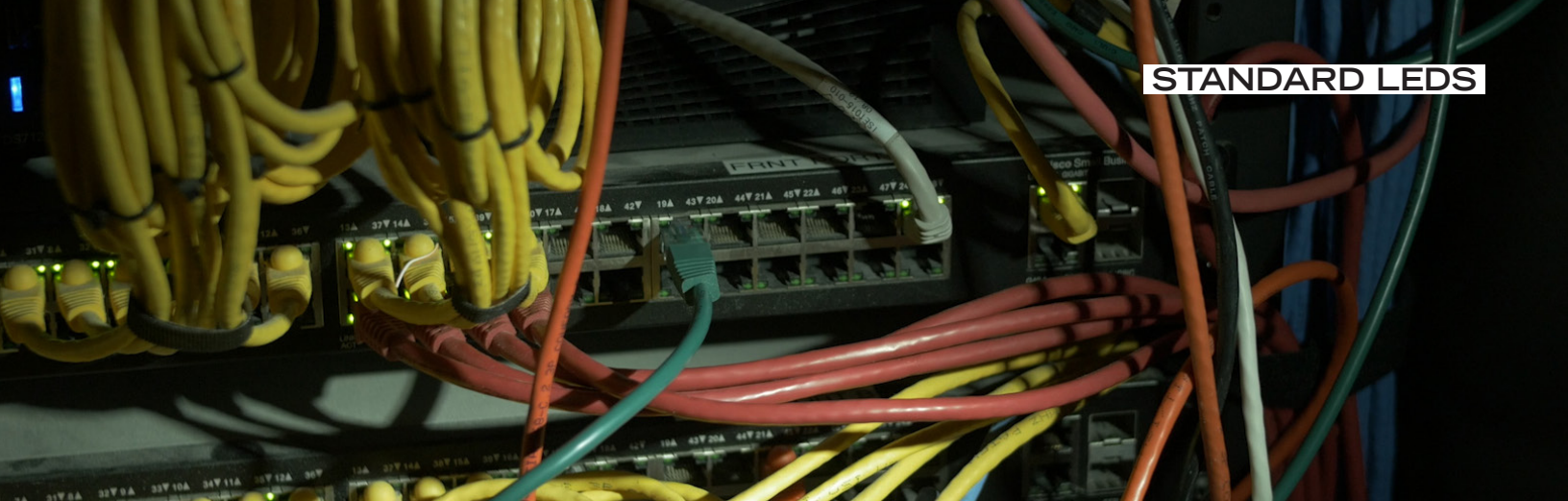
## BE MORE EFFICIENT.

The ability to work hands-free and have panoramic lighting enables you to work faster. This is especially useful in pressure-packed situations and when work has to be completed at an accelerated rate.

In the picture above, a video team is preparing kayaks and video equipment for a cave shoot in La Jolla, CA. The ability to work hands-free and identify potential hazards led to a successful and safe outcome for all, especially important because the shoot didn't start until 10:30PM on a summer weeknight. [See the shoot here.](#)



# TRUE TO LIFE™ LED TECHNOLOGY



## SEE COLORS BETTER

Colors can be seen more accurately with LED technology. This helps precision tasks like maintenance, installations, repairs, inspections and field EMS work be performed quickly.

As you can see in picture above, colors can be seen more vividly. In the case of red, there is a dramatic difference. These images are of a server room inspection to ensure that everything was functioning correctly and in the right place.



# BEAM COMPARISON

COMPETITION: STANDARD HEADLAMP



FOXFURY COMMAND+



FOXFURY DISCOVER







# LED COLOR COMPARISON



**WHITE LEDS**  
BEST FOR ALL PURPOSE TASKS



**WHITE & GREEN LEDS**  
CUT THROUGH SMOKE IN STRUCTURE FIRES



**WHITE & AMBER LEDS**  
BEST FOR WILDLAND/BRUSH USE



## REAR FLASHING LED



Being visible on location is important. A rear flashing LED helps the headlamp wearer be seen from behind. Whether as an individual or in a team, it's good for people to see you for your own personal safety.

LIGHT MODEL	REAR FLASHING COLOR
DISCOVER	RED
COMMAND	RED
COMMAND+	RED
COMMAND+ TILT RECHARGEABLE	GREEN
COMMAND+ LOPRO RECHARGEABLE	GREEN



# DURABLE



## ALL-WEATHER, WATERPROOF & FIRE RESISTANT

Weather can present logistical and operational challenges. FoxFury headlamps were built to be extra durable so that work can be performed anytime, anywhere when necessary. Responders and location crews have to get the job done no matter the weather or obstacles.

FoxFury headlamps and helmet lights work best within an operating temperature range of 14°F (-10°C) to 300°F (149°C). They can be used in cold environments, though battery life may be reduced. At extremely high temperatures, like anything else, headlamps can sustain cosmetic damage and possibly start to melt and/or warp. FoxFury lights are waterproof and meet requirements of NFPA.



# LOW PROFILE AND TILT MODELS



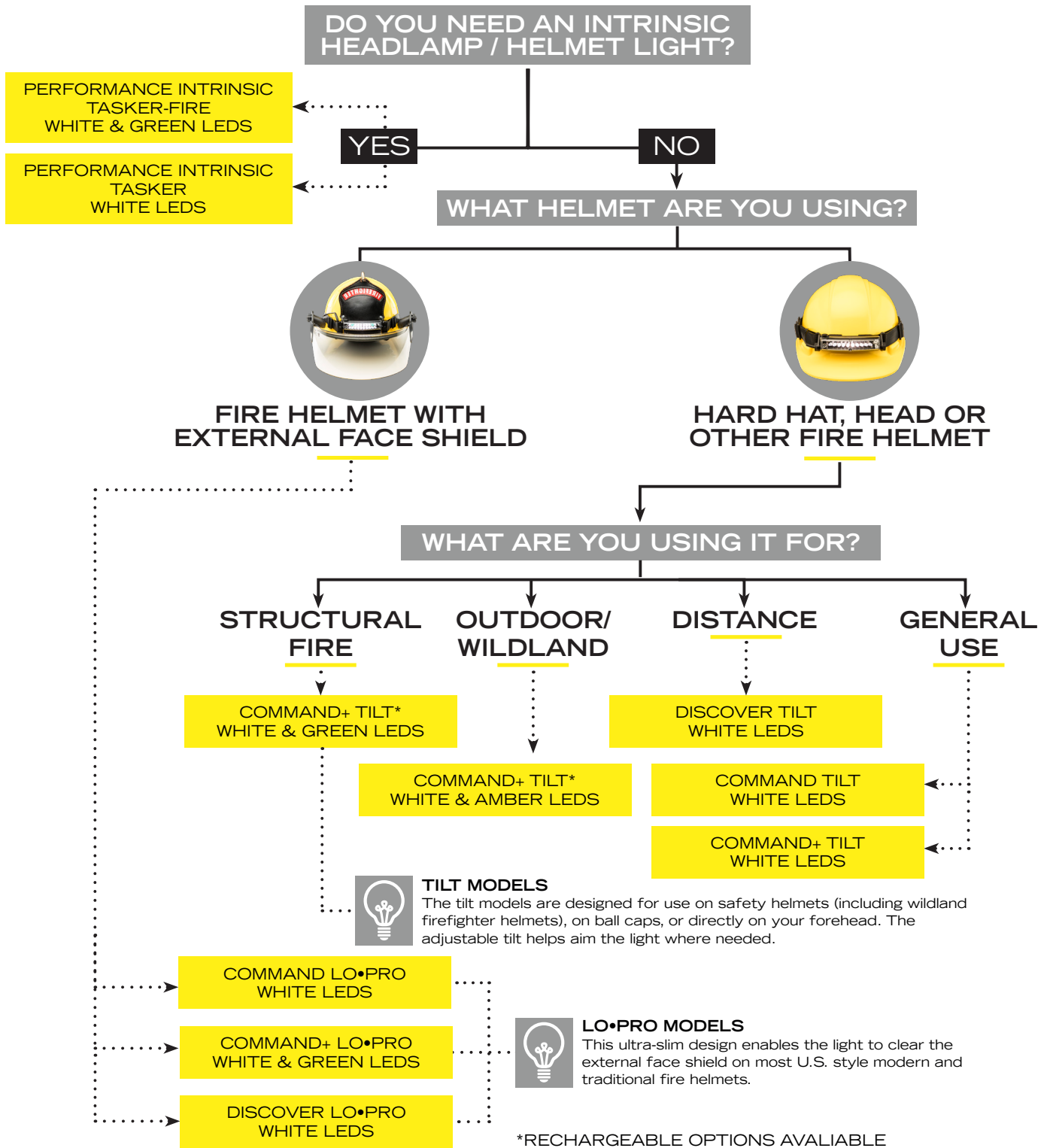
## ADJUSTABLE LIGHTS

FoxFury Tilt models feature an adjustable tilt plate which allows the light head to be adjusted up and down. This allows the light to be aimed where needed or flipped to prevent accidental blinding of others. In the picture above, an inspector checks wires to make sure everything is properly hooked up and functioning well.

Are you a firefighter with an external face shield on your helmet? Then you know that clearance room is a big deal. FoxFury Lo-Pro headlamps feature an ultra-slim design. They are built without a tilt plate, which allows them to sit closer to the helmet and clear most faceshields. These models are meant for use on US style firefighter helmets. They are not intended for wear on Gallet helmets or for wear on the forehead.



# DECISION CHART



## PANORAMIC LIGHTING

Unlike traditional headlamp beams that offer tunnel vision, the Command & Discover's offer focused and panoramic lighting (wider field of view) so you can see wider and farther. This provides immediate situational assessment.

## REAR FLASHING LED

The Command & Discover feature a highly visible Rear Flashing LED on the Battery Pack that can be seen from 1 mile (1.6km) away. This acts as a personal beacon to increase safety and be seen on scene.

## TRUE TO LIFE™ LEDs

FoxFury's True To Life™ LED technology allows you to see colors accurately. These LEDs give a true appearance where colors are seen clearly and vibrantly (as compared to standard LEDs).



**FOXFURY LIGHTING SOLUTIONS**  
760.945.4231 | 844.369.3879  
OCEANSIDE, CA, USA

**FOXFURY.COM**