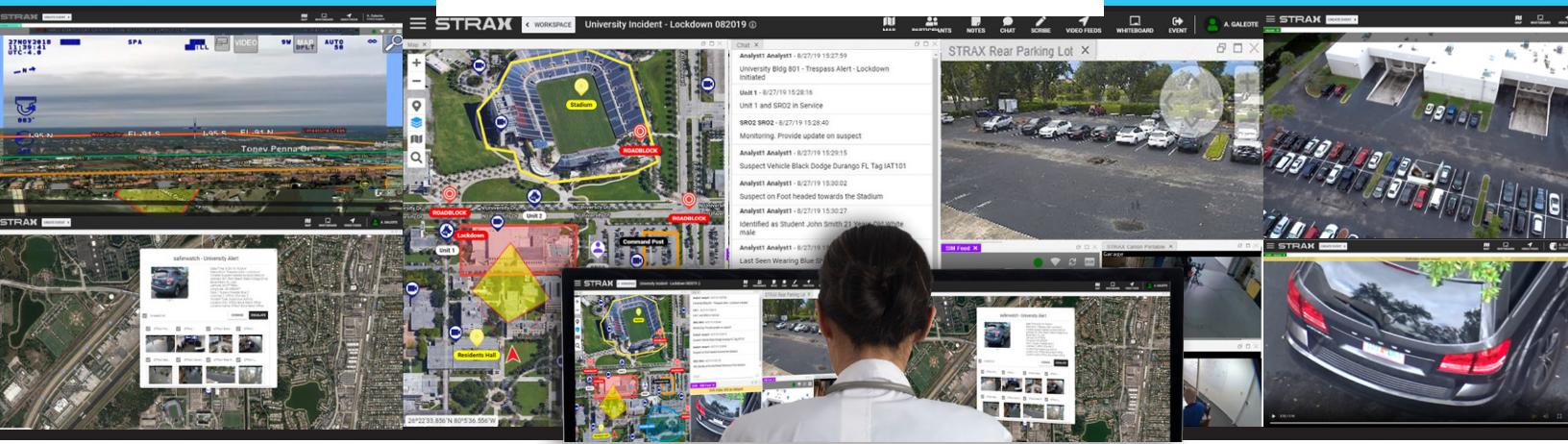


STRAX[®]

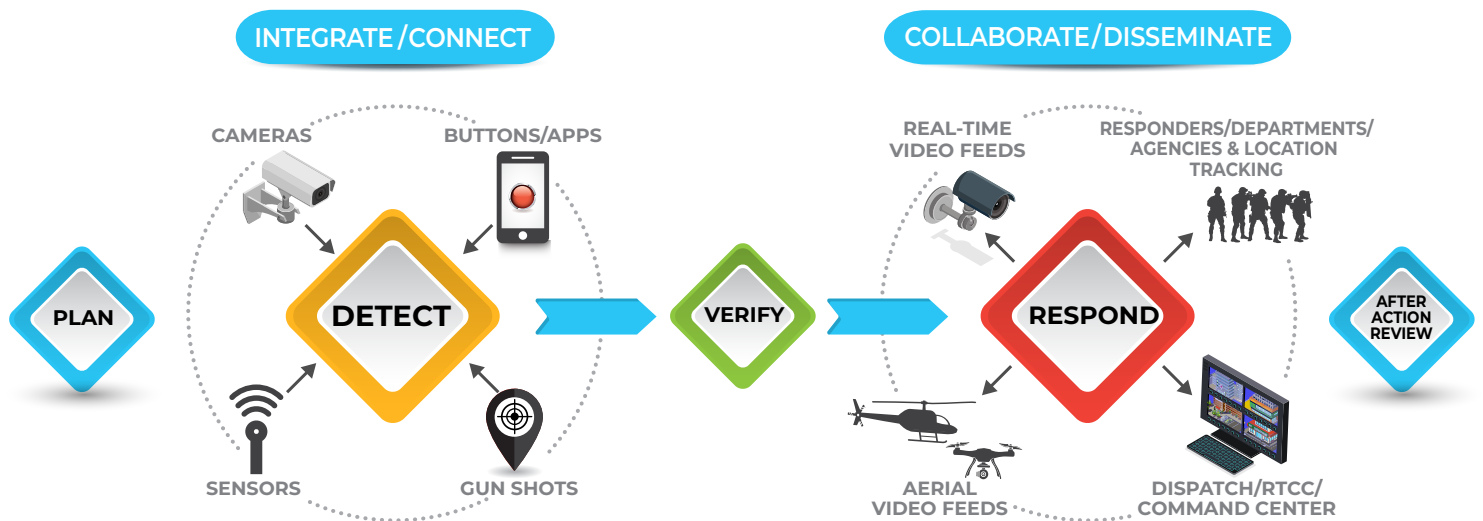
INTELLIGENCE GROUP

DEFENSE EQUIPMENT COMPANY - SALES@DEFEOP.COM



IMPROVE RESPONSE & SITUATIONAL AWARENESS

STRAX Intelligence Group provides a common operating platform designed for real-time response. By unifying priority alerts, video, and communication tools into one map-based operational view, the STRAX Platform allows for improved collaboration across agencies and command structures for a faster, more coordinated response and enhanced officer safety.

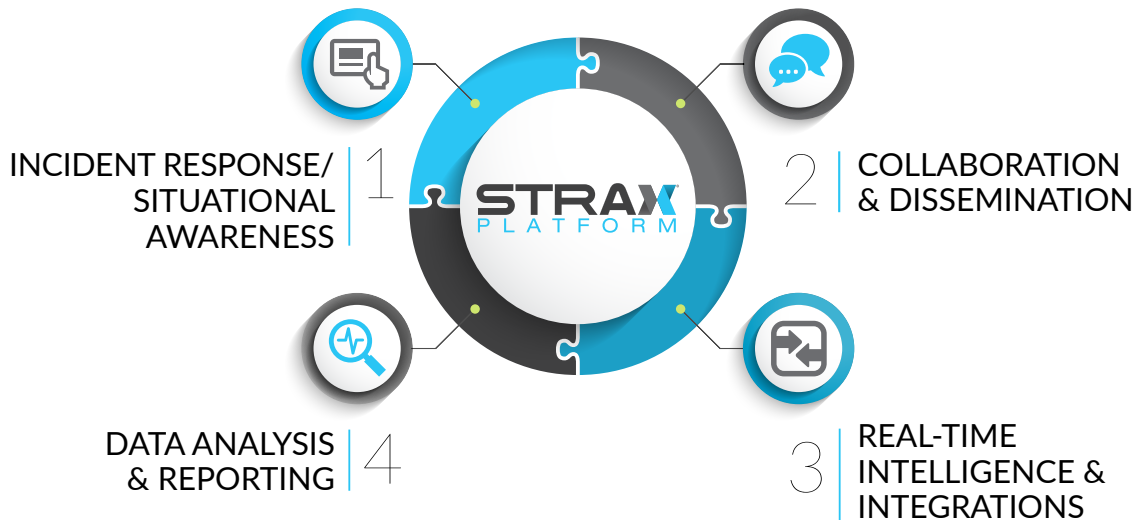


- **Earlier Detection & Event Mitigation:** Receive alerts from integrated apps, duress buttons and sensors
- **Increase Situational Awareness:** Integrate public, private, and manned/unmanned video feeds
- **Expedite Decision Making:** Real-time access to nearby cameras in the network in a single operational view
- **Enhance Officer Safety:** Quickly equip responders with real-time information and data
- **Cloud-Based Platform:** Collaborate and disseminate critical information instantly with all event participants both on scene and remote

SMARTER RESPONSE SOLUTIONS

STRAXIntelligence.com

COMMON OPERATING PLATFORM FOR REAL-TIME COLLABORATION & INTELLIGENCE DISSEMINATION



Control Access: Manage visible content and access through user permissions such as roles, command level, and groups based on agency configurations, policies and procedures.

Pre-Plan: Populate location specific plans with key items such as annotations, staging areas, and resources in advance for a faster, more coordinated response.

Geospatial Event Management: Quickly locate real-time alerts, events, cameras and unit locations, augmented with critical location data.

Video Intelligence: Expedite decision making with real-time access to integrated cameras in a single operational picture.

Customizable Workflow Configurations: Automate work flows based on alert type, incident and user role to streamline activity, reduce workload and focus on critical tasks at hand.

After Action Review: Review incidents with geospatial playback of events including video streams, annotations, chat logs and location of assets and resources.

CONTACT US TODAY TO SCHEDULE A DEMONSTRATION

561.409.5545 x126 • info@STRAXIntelligence.com

